

RAY Coffee Table 11H

|Product Code 33112/CER|

akula

designed for life



Dimensions



The Ray Collection is timeless, thanks to the luxurious hand-woven rope in combination with a durable aluminium frame.

With stackable dining chairs, lounge chair and a 2-seater sofa, this elegant range comes with comfortable, deep cushioning. An extensive range of coffee tables completes the collection.

Characteristics | Timeless, Charming, Functional

Technical

Weight | 5.2kg/11.5lbs

Frame | Powder-coated aluminium legs and ceramic tabletop

Lead Time from Stock | 4-6 Weeks

Colour Options

frame: pca
top: ceramic (9mm/0.35")

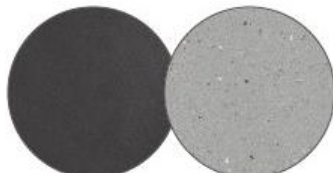
Option 1



AF08
white

4K11
sand

Option 2



AF10
lava

4K12
fossil

Features



TRIPLE
POWDER
COATING



HOSPITALITY
GRADE



LOW
MAINTENANCE

Designed by
DIPHANO



5-Year
Warranty



Competitive
Pricing



Marine Grade
Materials



Custom Design
Options



Vertical Factory -
Design to Delivery



History - 100
Years Experience



Stock Supported -
7,000+ Pieces